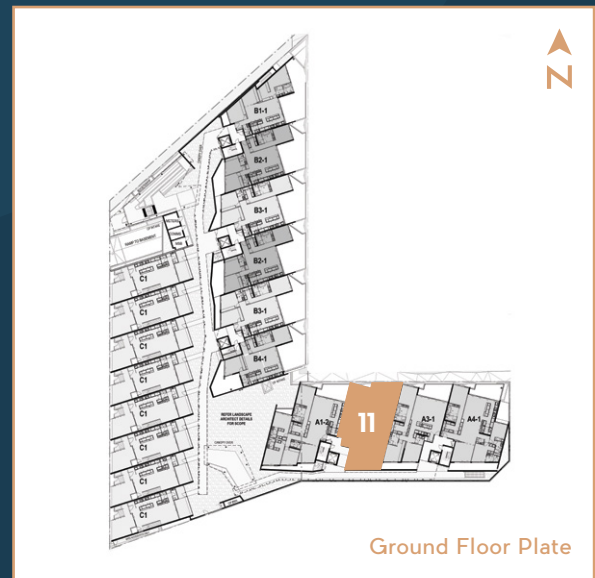


EAST

# HARBOUR ONE RESIDENCES

Featuring an open plan living space that extends out to the balcony, this residence includes a master suite with walk-in robe, a second bedroom, a media room and a courtyard. Each residence has the convenience of a secure storage cage and a minimum of three parking spaces.

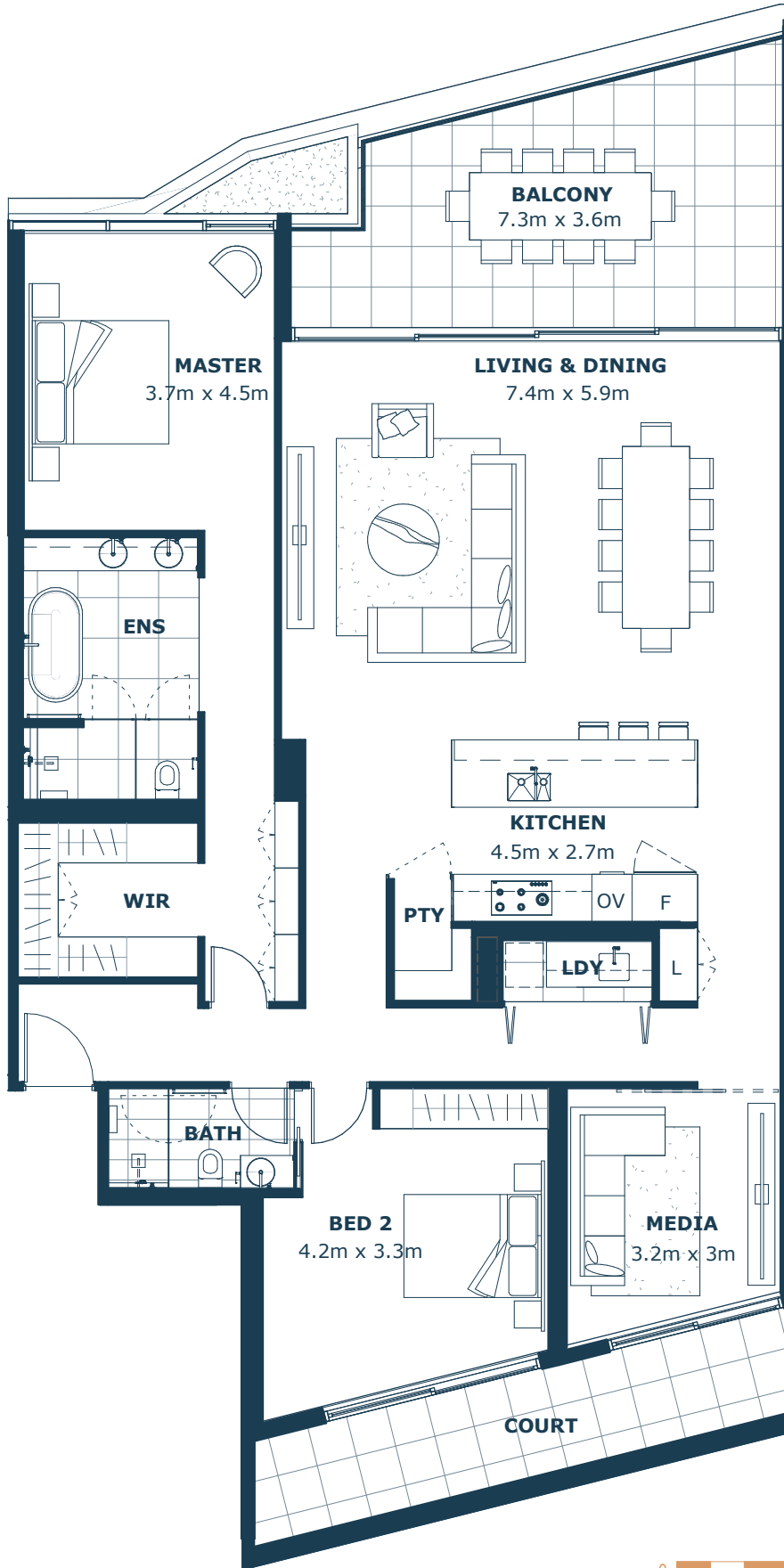
<b>Floor</b>	Ground
<b>Bedrooms</b>	2 + Media
<b>Bathrooms</b>	2
<b>Internal</b>	168m <sup>2</sup>
<b>External</b>	37m <sup>2</sup>
<b>Total</b>	205m <sup>2</sup>





# HARBOUR ONE

ONE



REV 2 | DATE 15.04.21



These floor plans are provided for illustrative purposes only and are intended to give an indication of the proposed layout of lot. Changes may be made to layout of the lot (including window locations which differ on each level) during development as permitted by the Contract and all images and dimensions in these floor plans are not a representation by the seller or its agents or representatives. Whilst all reasonable care has been taken in providing this information the seller and its related companies and their representatives, consultants and agents accept no responsibility for the accuracy of any information contained herein or for any action taken in reliance thereon by any third party whether purchaser, potential purchaser or otherwise. In addition, the loose items depicted on the floor plans (including, without limitation, any tables, chairs, lounge suits, sideboards, entertainment units, outdoor furniture and beds which may be depicted) are not by virtue of this floor plan included in the lot.