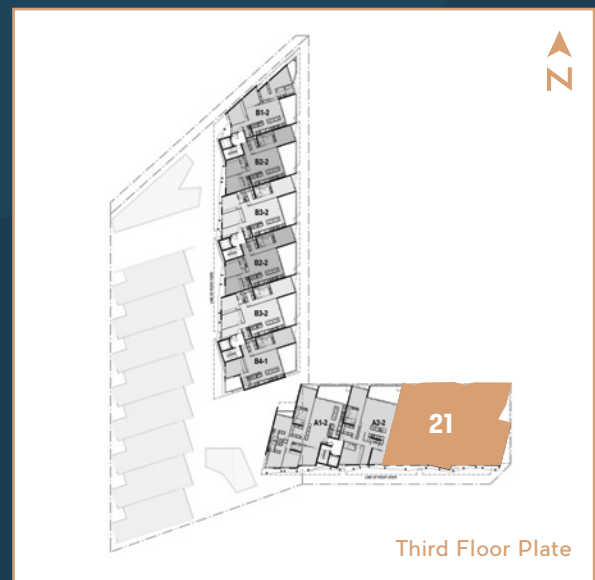


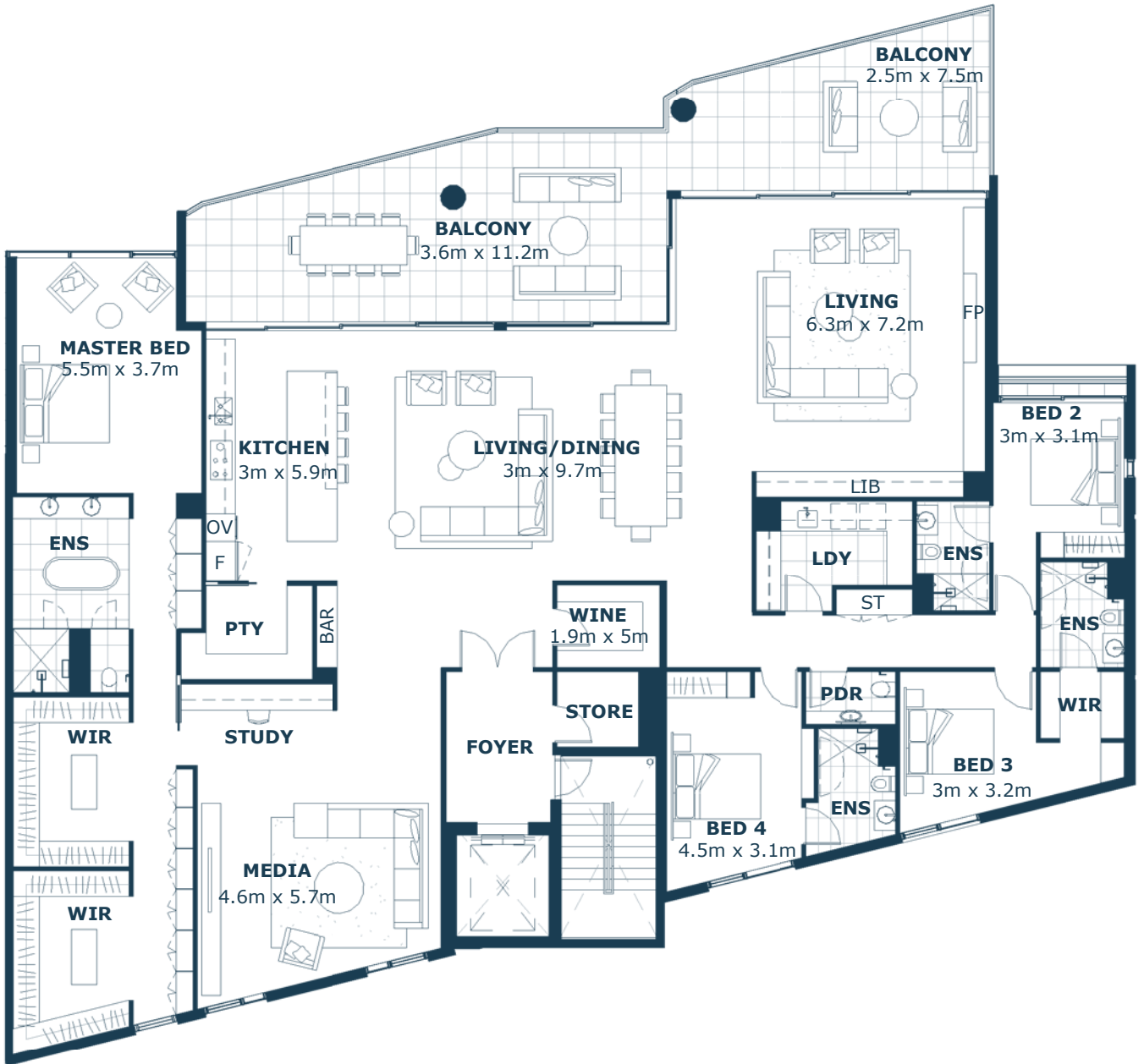
EAST

HARBOUR ONE RESIDENCES

Harbour One's penthouses include two living spaces, a master suite with a double walk-in robe, three additional bedrooms, a media room, a wine cellar and an expansive entertainer's balcony. Each residence has the convenience of a secure storage cage and three parking spaces.

Floor	Third
Bedrooms	4 + Media
Bathrooms	4.5
Internal	372m ²
External	68m ²
Total	440m ²





REV 1 | DATE 15.04.21