

## TOWNHOME 3

# HARBOUR ONE TOWNHOMES

Featuring three bedrooms, including a generous master suite, plus a study and media room, this spacious two-storey townhome offers an open plan layout that flows seamlessly onto a spacious landscaped backyard, and a large balcony at the front.

An internal lift takes you from your two-car garage to your first and second floors with ease, whilst the direct street entry gives your home its own identity and address.

---

<b>Bedrooms</b>	<b>3</b>
-----------------	----------

---

<b>Bathrooms</b>	<b>3.5</b>
------------------	------------

---

<b>Car spaces</b>	<b>2 + 1 buggy space</b>
-------------------	--------------------------

---

<b>Internal</b>	<b>271m<sup>2</sup></b>
-----------------	-------------------------

---

<b>External</b>	<b>133m<sup>2</sup></b>
-----------------	-------------------------

---

<b>Total</b>	<b>404m<sup>2</sup></b>
--------------	-------------------------

---



Artist impression. Indicative only and subject to change.

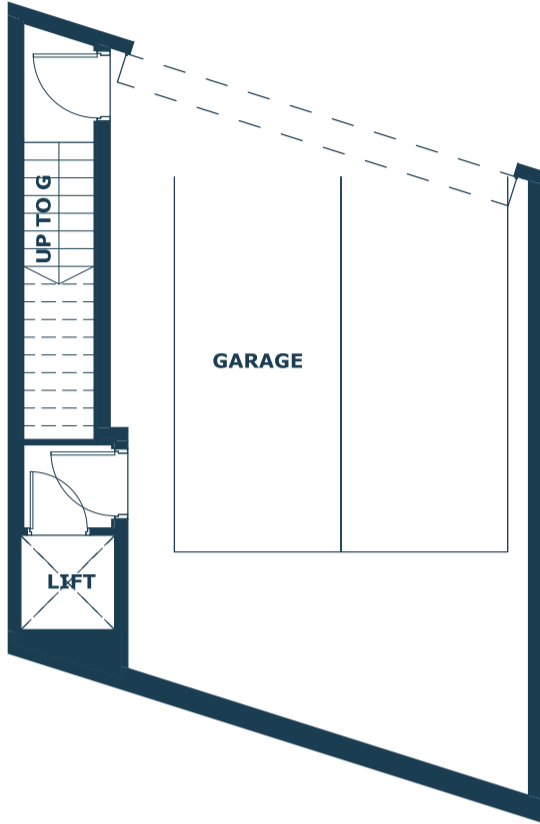


# HARBOUR ONE

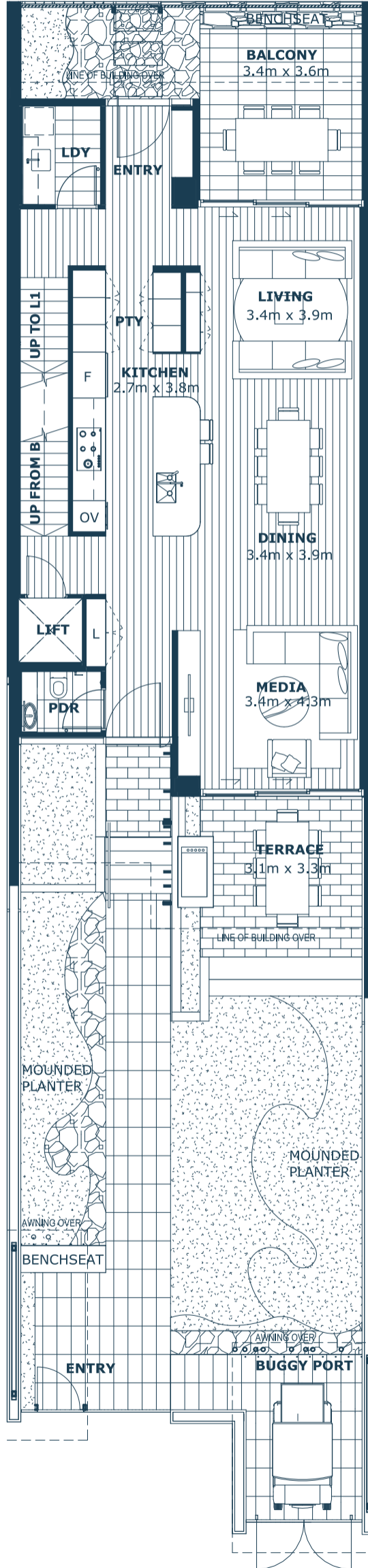
ONE



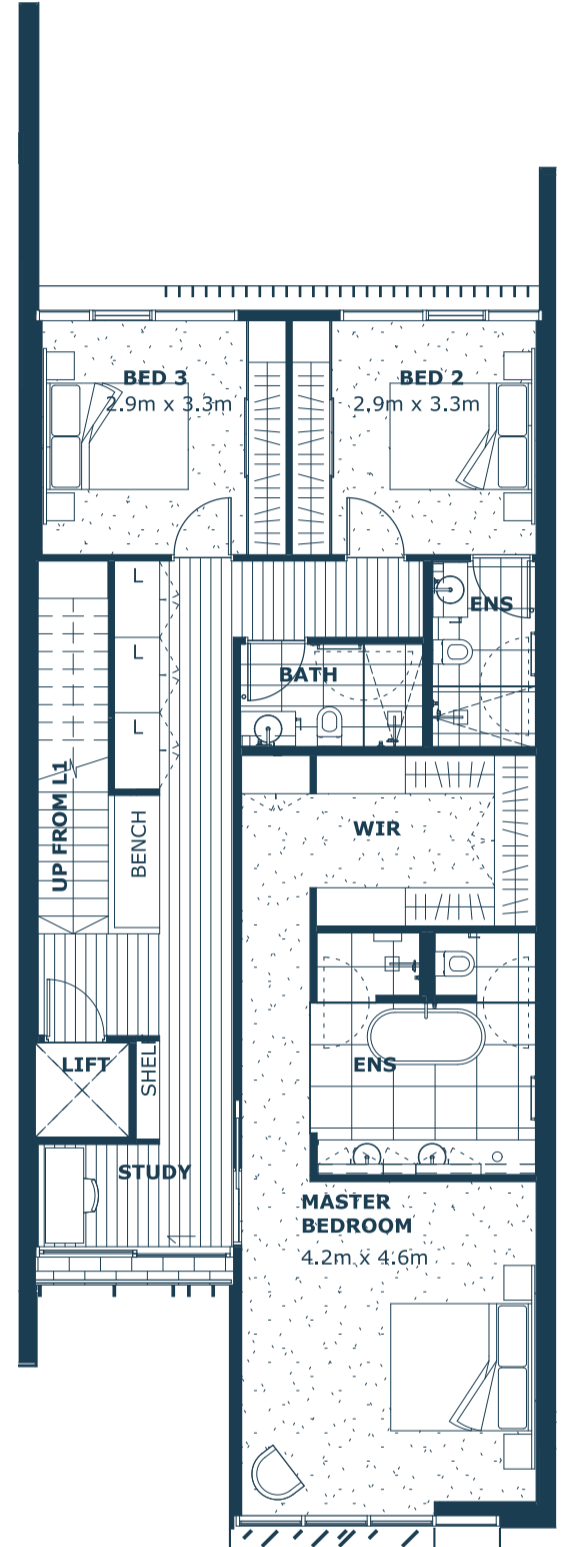
## BASEMENT



## FIRST FLOOR



## SECOND FLOOR



REV A | DATE 23.01.24