

TOWNHOME 7

HARBOUR ONE TOWNHOMES

Featuring three bedrooms, including a generous master suite, plus a study and media room, this spacious two-storey townhome offers an open plan layout that flows seamlessly onto a spacious landscaped backyard, and a large balcony at the front.

An internal lift takes you from your two-car garage to your first and second floors with ease, whilst the direct street entry gives your home its own identity and address.

Bedrooms	3
-----------------	----------

Bathrooms	3.5
------------------	------------

Car spaces	2 + 1 buggy space
-------------------	--------------------------

Internal	271m²
-----------------	-------------------------

External	133m²
-----------------	-------------------------

Total	404m²
--------------	-------------------------



Artist impression. Indicative only and subject to change.

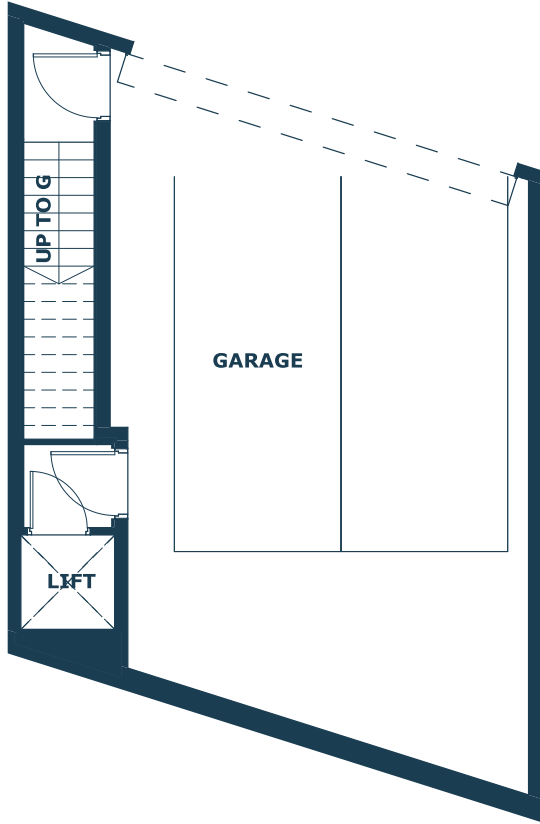


HARBOUR ONE

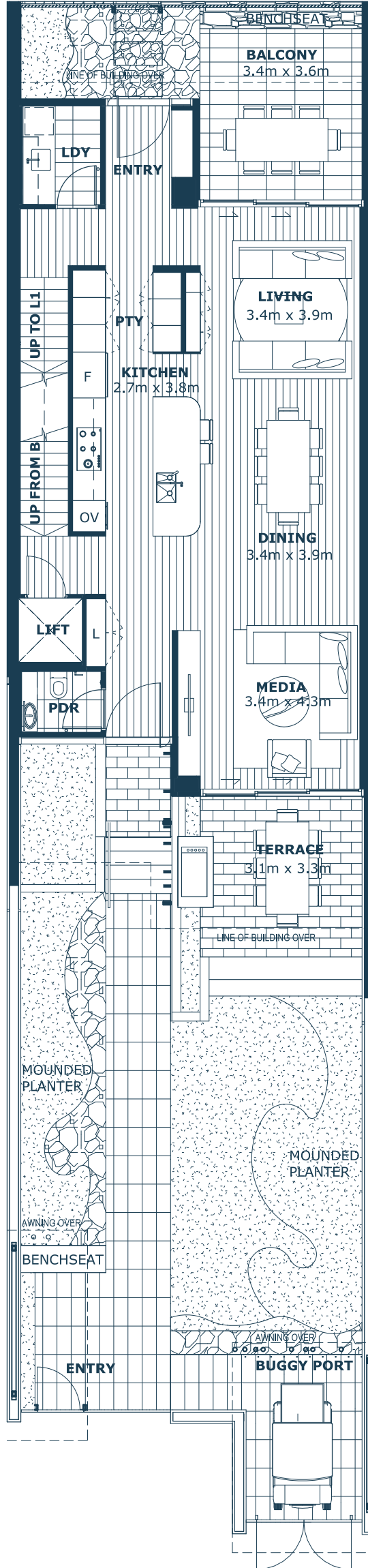
ONE



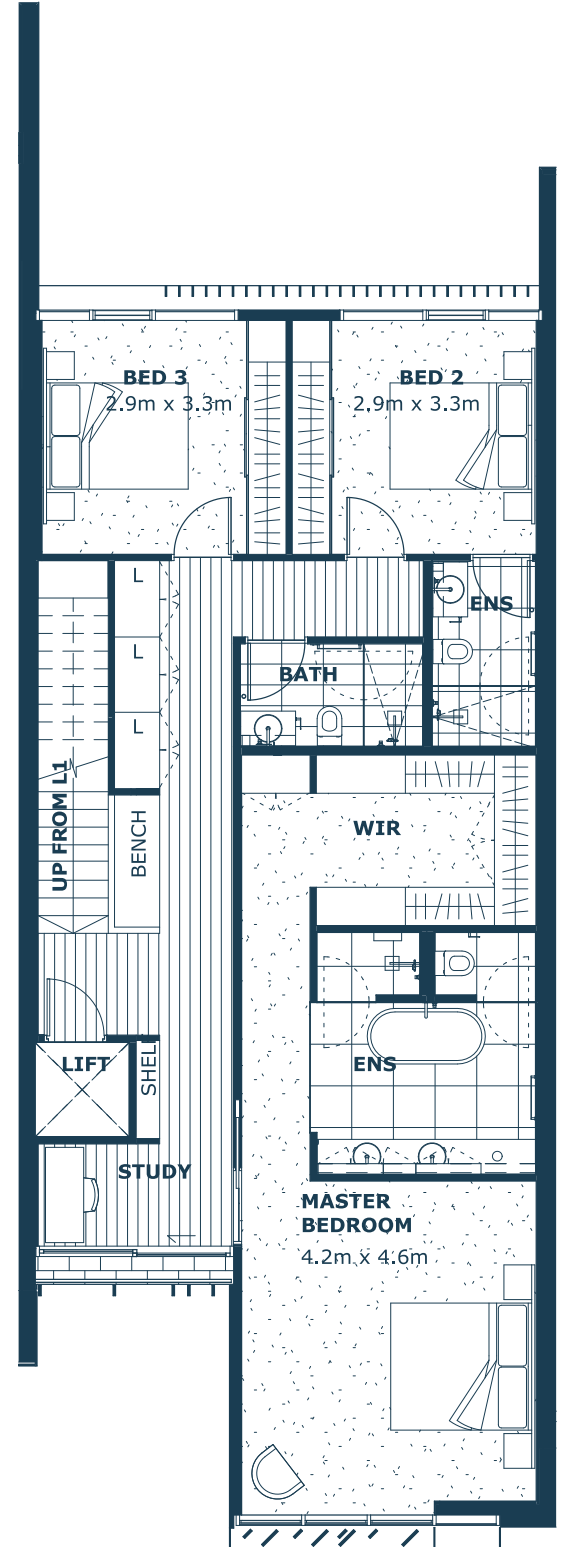
BASEMENT



FIRST FLOOR



SECOND FLOOR



0 6
SCALE: 1:100

REV A | DATE 23.01.24